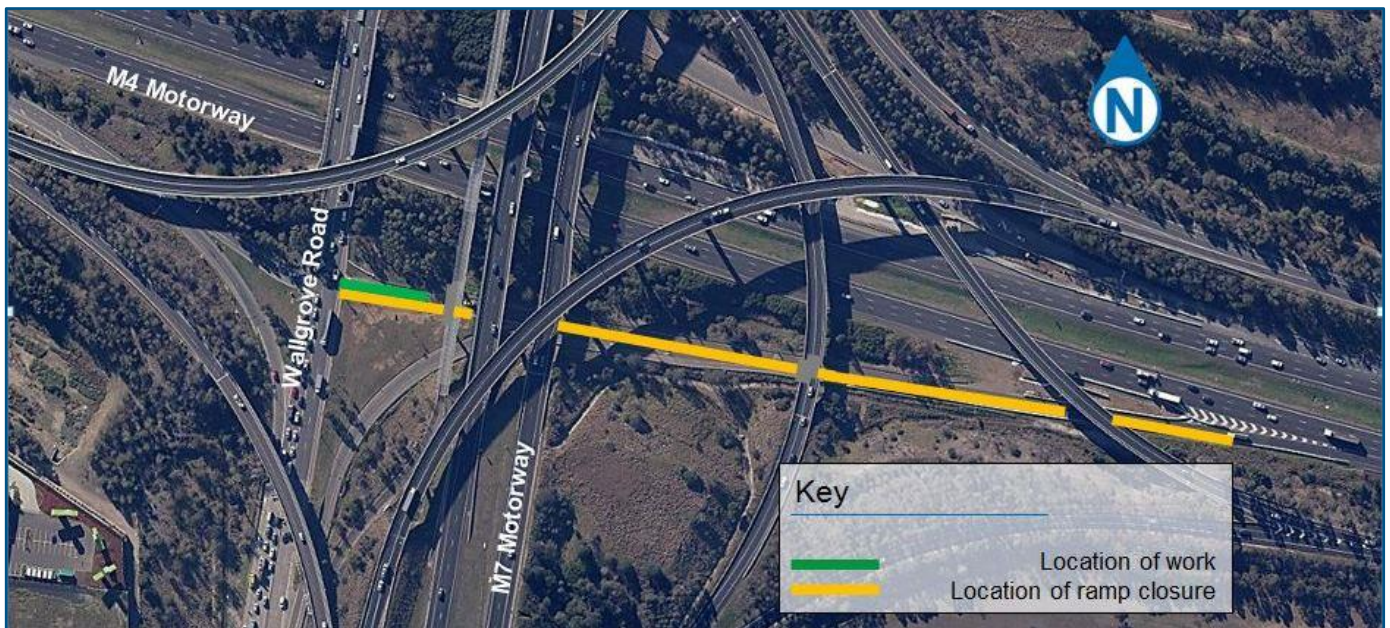


M4 Smart Motorway

Wallgrove Road westbound off ramp

Roads and Maritime Services | January 2019



The NSW Government is investing \$470 million to build the **M4 Smart Motorway project**. This project will introduce intelligent technology to the M4 Motorway between Pitt Street, Mays Hill and Russell Street, Lapstone.

When complete, the M4 Smart Motorway is expected to:

- reduce average travel times
- provide more reliable journeys
- reduce crashes by up to 30 per cent.

Traffic flow work at ramp

Roads and Maritime Services is continuing work at the **Wallgrove Road westbound off ramp** at Eastern Creek.

The ramp will be closed for five nights from **Thursday 31 January to Tuesday 5 February** between **9pm and 5am** to install cabling and dig trenches for vehicle detection loops and CCTV cameras. This work is part of the Intelligent Transport System (ITS) which will help keep traffic flowing on the M4 Smart Motorway.




Our work schedule

Our day work hours are between **7am and 6pm** from **Monday to Friday** and **8am and 1pm Saturday**, excluding public holidays, weather permitting.

Our night work hours are between **6pm and 7am** from **Sunday to Friday**.

Contact Us

If you have any questions about the M4 Smart Motorway project, please contact our delivery partner **Fulton Hogan** on:

 1800 989 929 (press 2)

 M4SM-Stage1@fultonhogan.com.au

 rms.nsw.gov.au/m4smartmotorway

 PO Box 973, Parramatta NSW 2150

Traffic changes and detours

There will be temporary traffic changes during our work hours to ensure the work zone is safe.

A detour will be in place during the ramp closure, and may affect travel times. Motorists can exit the M4 Motorway at Reservoir Road.

To ensure the safety of workers and motorists, please keep to speed limits and follow detour signs and traffic controller directions.

For the latest traffic updates, you can call 132 701, visit livetraffic.com or download the Live Traffic NSW App.

How will the work affect you?

Our work may be noisy at times but we will do everything we can to minimise its impact, including using squawkers rather than beepers on reversing vehicles.



Translating and Interpreting Service

If you need an interpreter, please call the Translating and Interpreting Service (TIS National) on **131 450** and ask them to telephone Roads and Maritime Services on 1800 989 929

Arabic

إذا كنتم بحاجة إلى مترجم، الرجاء الاتصال بخدمة الترجمة الخطية والشفوية (TIS National) على الرقم 131 450، والطلب منهم الاتصال بوكالتكم Roads and Maritime Services على الرقم 1800 989 929

Cantonese

若你需要口譯員，請致電 131 450 聯絡翻譯和口譯服務署 (TIS National)，要求他們致電 1800 989 929 聯絡 Roads and Maritime Services。

Mandarin

如果你需要口译员，请致电 131 450 联系翻译和口译服务署 (TIS National)，要求他们致电 1800 989 929 联系 Roads and Maritime Services。

Greek

Αν χρειάζεστε διερμηνέα, παρακαλείσθε να τηλεφωνήσετε στην Υπηρεσία Μετάφρασης και Διερμηνείας (Εθνική Υπηρεσία ΤΙΣ) στο **131 450** και ζητήστε να τηλεφωνήσουν Roads and Maritime Services στο 1800 989 929

Italian

Se desiderate l'assistenza di un interprete, prego telefonare al Servizio Interpreti e Traduttori (TIS National) al **131 450** chiedendo di contattare Roads and Maritime Services al 1800 989 929

Korean

통역사가 필요하시면 번역통역서비스 (TIS National) 에 **131 450** 으로 연락하여 이들에게 1800 989 929 번으로 Roads and Maritime Services 에 전화하도록 요청하십시오.

Vietnamese

Nếu cần thông ngôn viên, xin quý vị gọi cho Dịch Vụ Thông Phiên Dịch (TIS Toàn Quốc) qua số **131 450** và nhờ họ gọi cho Roads and Maritime Services qua số 1800 989 929