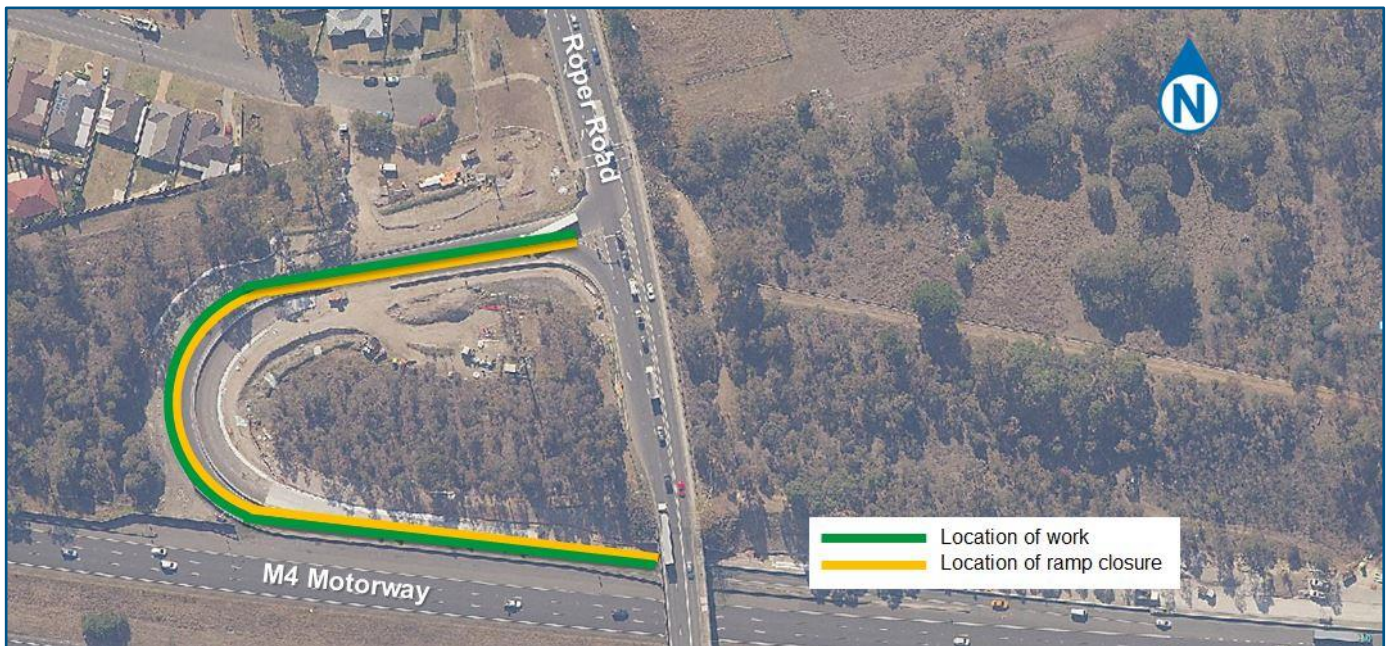


# M4 Smart Motorway

## Roper Road eastbound on ramp

Roads and Maritime Services | March 2019



Roads and Maritime is building the **M4 Smart Motorway**. This project will introduce intelligent technology to the M4 Motorway between Pitt Street, Mays Hill and Russell Street, Lapstone.

When complete, the M4 Smart Motorway is expected to:

- reduce average travel times
- provide more reliable journeys
- reduce crashes by up to 30 per cent.

### Replacement of concrete slabs

Roads and Maritime Services is continuing work on the **Roper Road eastbound on ramp** at Colyton.

The Roper Road eastbound on ramp will be closed for five nights from **Monday 11 March** to **Saturday 16 March** between **9pm and 5am** to replace concrete slabs along the on ramp.



## Our work schedule

We will be on site for five nights between **Monday 11 March and Saturday 16 March**, weather permitting.

Our work hours will be between **9pm and 5am**.

Day work at this site will continue during this time between **7am and 6pm Monday to Friday and 8am to 1pm Saturday**.

## Contact Us

If you have any questions about the M4 Smart Motorway project, please contact our delivery partner **Fulton Hogan** on:



1800 989 929 (press 2)



M4SM-Stage1@fultonhogan.com.au



rms.nsw.gov.au/m4smartmotorway



PO Box 973, Parramatta NSW 2150

## Traffic changes and detours

There will be temporary traffic changes during our work hours to ensure the work zone is safe.

Detours will be in place during the ramp closure and may affect travel times.

Northbound traffic on Roper Road will be diverted east along the Great Western Highway to enter the M4 Motorway at Wallgrove Road.

Southbound traffic on Roper Road will be diverted to Erskine Park Road to join the M4 Motorway eastbound at Mamre Road.

To ensure the safety of workers and motorists, please keep to speed limits and follow detour signs and traffic controller directions.

For the latest traffic updates, you can call 132 701, visit [livetraffic.com](http://livetraffic.com) or download the Live Traffic NSW App.

## How will the work affect you?

The work at this location will form an integral link in the Intelligent Transport System (ITS) network. The ITS will provide real time information to improve traffic flow and travel time on the M4 Smart Motorway.

Our work may be noisy at times but we will do everything we can to minimise its impact, including:

- turning off machinery when not in use
- briefing workers to minimise noise
- doing the loudest work before midnight
- using squawkers rather than beepers on reversing vehicles.



### Translating and Interpreting Service

If you need an interpreter, please call the Translating and Interpreting Service (TIS National) on **131 450** and ask them to telephone Roads and Maritime Services on 1800 989 929

#### Arabic

إذا كنتم بحاجة إلى مترجم، الرجاء الاتصال بخدمة الترجمة الشفهية والخطية (TIS National) على الرقم **131 450**، والطلب منهم الاتصال بوكالتكم Roads and Maritime Services على الرقم 1800 989 929

#### Cantonese

若你需要口譯員，請致電 **131 450** 聯絡翻譯和口譯服務署 (TIS National)，要求他們致電 1800 989 929 聯絡 Roads and Maritime Services。

#### Mandarin

如果你需要口译员，请致电 **131 450** 联系翻译和口译服务署 (TIS National)，要求他们致电 1800 989 929 联系 Roads and Maritime Services。

#### Greek

Αν χρειάζεστε διερμηνέα, παρακαλείσθε να τηλεφωνήσετε στην Υπηρεσία Μετάφρασης και Διερμηνείας (Εθνική Υπηρεσία TIS) στο **131 450** και ζητήστε να τηλεφωνήσουν Roads and Maritime Services στο 1800 989 929

#### Italian

Se desiderate l'assistenza di un interprete, prego telefonare al Servizio Interpreti e Traduttori (TIS National) al **131 450** chiedendo di contattare Roads and Maritime Services al 1800 989 929

#### Korean

통역사가 필요하시면 번역통역서비스 (TIS National) 에 **131 450** 으로 연락하여 이들에게 1800 989 929 번으로 Roads and Maritime Services 에 전화하도록 요청하십시오.

#### Vietnamese

Nếu cần thông ngôn viên, xin quý vị gọi cho Dịch Vụ Thông Phiên Dịch (TIS Toàn Quốc) qua số **131 450** và nhờ họ gọi cho Roads and Maritime Services qua số 1800 989 929